

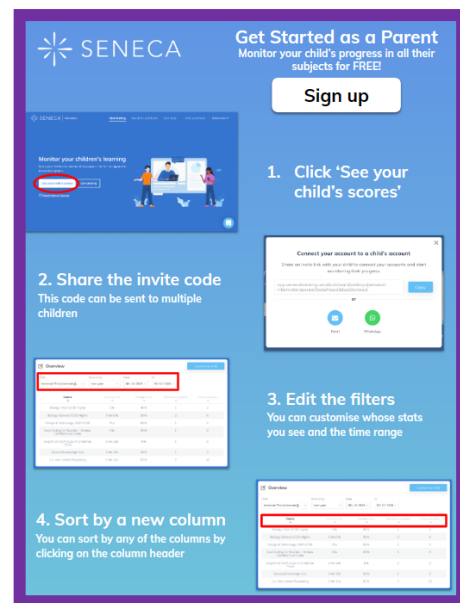
# Seneca Learning: Information for Parents & Carers

We are delighted to announce that we have invested in **Seneca Premium** to support your child's revision this academic year.

## What is Seneca?

Seneca Learning is an online learning platform that has high-quality courses for all subjects at both Key Stage 3 and Key Stage 4. Your child will be able to log into Seneca on their phone, tablet or computer and study any of their school subjects. Seneca's Premium pass offers them access to:

- Over 800 online courses such as Hardest Questions, Predicted Papers, and HyperLearning.
- Smart Learning Mode which uses data & neuroscience to tell your child exactly what to learn and when to learn it.
- Wrong Answer Mode which helps pupils learn as quickly as possible.



## How should your child use Seneca Premium?

All pupil accounts have been set up via their school email addresses – please see below – and have completed training in school to help ensure they can access this from home. There is a useful PowerPoint [\[LINK\]](#) that Seneca have put together with top tips for pupils about how to use the package.

## Seneca Premium Parent Accounts

**Seneca also provides free parent accounts.** Free parent accounts allow you to track your child's learning/revision or learn alongside your child. This can help make conversations about school, learning, and revision, easier.

You can sign up for a free Seneca parent account here: [app.senecalearning.com/parent](https://app.senecalearning.com/parent)

Seneca have made this handy [2 minute video](#) to help you get started. Or you can [read how to get your free account](#) if you'd prefer.

## Logging in (information for pupils)

All pupils have a Seneca Premium account. To login....

1. Click on the following update link if you haven't already:  
<https://app.senecalearning.com/update>  
(Please note this only needs to be done once. In future go straight to step 2)
2. Go to google and type SENECA learning or click the following link:  
<https://senecalearning.com/en-GB/>
3. Click **'log in'** on the top right of the page
4. Click **'Continue with Microsoft'**. If you are already logged into your email account, this will work automatically. If not, use your school email address and password to login.



## Adding courses (information for pupils)

Pupils can add courses using the filters down the left-hand side of their Seneca Dashboard. Once courses have been added, pupils can use both the free and premium resources to revise and complete home learning.

## Year 10 Homework Information for Parents & Carers

Homework in each subject will differ slightly according to the most appropriate way of setting homework for that subject. Subject teachers will ensure time is allocated in lessons to ensure that any homework set is clearly communicated. The following table outlines the main methods each department sets homework in Year 10.

Art & Art Fashion	There is an expectation that all pupils complete independent homework each week, where pupils will practise skills that they have been taught that week. Specific homework may be set via <b>Class Charts</b> . Homework will be presented in sketch books which allows pupils to build a portfolio of evidence.
English	Homework will be set/completed via <b>Seneca Learning</b> , with each half-term's topic linked to a current area of GCSE study. Other homework may be set using <b>Class Charts</b> , if the need arises.
Food Technology	Homework will be set/completed via <b>Seneca Learning</b> . Your child will need to log on to this platform to see assignments set for homework.
Geography	Homework will be set/completed via <b>Seneca Learning</b> . Your child will need to log on to these platforms to see assignments set for homework. Parents and carers can also log on to view their child's homework tasks and monitor completion of work set and scores/progress. Your child may occasionally receive other homework tasks, and these will be set via <b>Class Charts</b> .
Health & Social Care	Homework will be set via <b>Boost Learning</b> . Pupils will receive login details at the beginning of the academic year. Guidance will be given to enable pupils to access and complete work.
History	Homework will be set and completed via <b>Seneca Learning</b> . Your child will need to log on to this platform to see assignments set for homework. Your child may occasionally receive other homework tasks and these will be set via <b>Class Charts</b> .
ICT & Business	Homework will be set/completed either via <b>Seneca Learning</b> or <b>Class Charts</b> . Your child will need to log on to these platforms to see assignments set for homework.
Maths	Homework will be set/completed via <b>MathsWatch</b> at: <a href="https://vle.mathswatch.co.uk/vle/">https://vle.mathswatch.co.uk/vle/</a> . Your child will need to log on to this platform to see assignments set for homework. Parents and carers can view their child's homework tasks and also monitor completion of work set and scores/progress using their child's MathsWatch account.
Media Studies	Homework will be set via <b>Class Charts</b> , with regular work used to revise past topics, develop wider Media knowledge and apply theory to textual examples.
Music	Homework will be set/completed via <b>TeachingGadget</b> at: <a href="https://teachinggadget.com/">https://teachinggadget.com/</a> or <b>Focus on Sound</b> at: <a href="https://portal.focusonsound.com/expired/">https://portal.focusonsound.com/expired/</a> . Your child will need to log on to this platform to complete assignments set for homework. Homework lessons, unfamiliar listening, music theory work and quizzes will be added to <b>Class Charts</b> .
Physical Education	Homework will be set/completed via <b>Seneca Learning</b> . Your child will need to log on to this platform to see assignments set for homework. Parents and carers can also log on to view their child's homework tasks and also monitor completion of work set and progress.
Religious Education	Homework will be set/completed via <b>Seneca Learning</b> . Your child will need to log on to this platform to see assignments set for homework. Parents and carers can also log on to view their child's homework tasks and also monitor completion of work set and progress.
Resistant Materials	Homework will be set/completed via <b>Seneca Learning</b> . Your child will need to log on to this platform to see assignments set for homework. Parents/carers can also log on to view their child's homework tasks and also monitor completion of work set and scores/progress.
Science	Homework will be set by teachers using either <b>Seneca</b> for online homework or with recall/revision booklets and associated in class quizzes. The homework will be recorded on <b>Class Charts</b> so that parents can see when homework is set and due to be completed.
Spanish	Homework will be set and completed via <a href="https://uk.language-gym.com/">https://uk.language-gym.com/</a> or <b>Seneca Learning</b> . Your child will need to log on to these platforms to see assignments set for homework. Your child may receive other homework tasks such as learning vocabulary, and these will be set via <b>Class Charts</b> .
Travel & Tourism	Homework will be set/completed via <b>Seneca Learning</b> . Your child will need to log on to these platforms to see assignments set for homework. Parents and carers can also log on to view their child's homework tasks and monitor completion of work set and scores/progress. Your child may occasionally receive other homework tasks, and these will be set via <b>Class Charts</b> .